

# Model JCM-2

**Indoor Current Transformer**  
**2,500 V, BIL 45 kV, 1,200 A to 4,000 A, 50/60 Hz**

## Application

Designed for outdoor service; suitable for operating meters, relays and control devices.

## ANSI Meter

### Accuracy Classification, 60 Hz

B-0.1 through B-1; all models 0.3

## ANSI Relay

### Accuracy Classification, 60 Hz

All models C200

## Weight

(approximate, in pounds)  
Transformer, without base 40/37

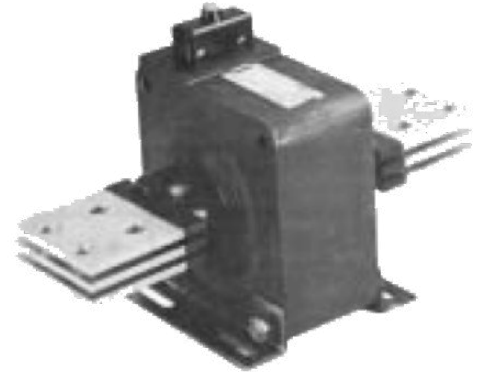
## Reference Drawings

### Accuracy Curves at 60 Hz:

1,200:5 .....	9689241051
1,500:5 .....	9689241052
2,000:5 .....	9689241053
3,000:5 .....	9689241055
4,000:5 .....	9689241056

### Excitation Curves:

1,200:5 .....	9689241294
1,500:5 .....	9689241294
2,000:5 .....	9689241294
3,000:5 .....	9689241294
4,000:5 .....	9689241294
Outline Drawing .....	8949928
Wiring Diagram ... refer to page 41, figure 3	



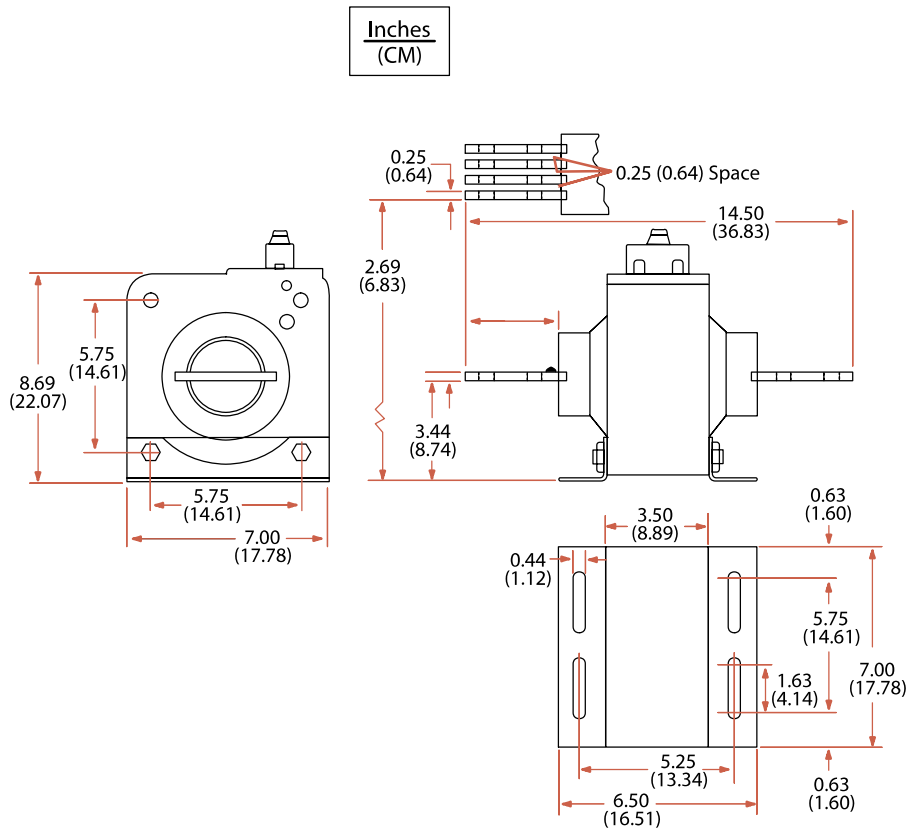
JCM-2 Current Transformer

## Model JCM-2 - Data Table

Current Ratio (in Amps) Pri : Sec	Continuous Thermal Current Rating Factor 30 °C Ambient	Catalog Number
400:5	1.33	752X020001
500:5	1.33	752X020002
600:5	1.33	752X020003
800:5	1.33	752X020004
1,000:5	1.33	752X020005
1,200:5	1.33	752X020006
1,500:5	1.33	752X020007
2,000:5	1.33	752X020008
3,000:5	1.33	752X020010
4,000:5	1.0	752X020011



## JCM-2 Mechanical Dimensions



### Construction and Insulation

Please refer to General Product Information, items 1.2 and 1.8.

### Core

Please refer to General Product Information, item 2.2.

### Coils

Please refer to General Product Information, item 3.7.

### Primary Terminals

Please refer to General Product Information, item 4.5.

### Secondary Terminals

Please refer to General Product Information, item 4.17.

### Polarity

Please refer to General Product Information, item 7.2.

### Baseplate and Mounting

Please refer to General Product Information, item 5.10.

### Nameplate

Please refer to General Product Information, item 6.3.

### Maintenance

Please refer to General Product Information, item 10.1 and pages 24-27.

### Mechanical Rating

Mechanical limits are omitted since, if bar-primary type transformers are properly installed, their mechanical strength is nearly unlimited.

[GEGridSolutions.com](http://GEGridSolutions.com)

Grid-AIS-L4-ITL\_Model\_JCM\_2-1451-2017\_07-EN. © Copyright 2017. General Electric Company and Instrument Transformers LLC reserve the right to change specifications of described products at any time without notice and without obligation to notify any person of such changes.

### Worldwide Contact Center

Web: [www.GEGridSolutions.com/contact](http://www.GEGridSolutions.com/contact)

Phone: +44 (0) 1785 250 070

USA and Canada: +1 (0) 800 547 8629

Europe, Middle East and Africa: +34 (0) 94 485 88 00

