

Accessories

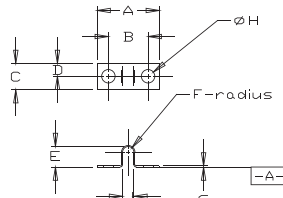
Terminal Block Accessories

J & JS Jumpers

J 600 = LL100

J 601 = LL200

J 602 = LL300



J Type Jumper



JS Type Jumper
*Per 55164/28B

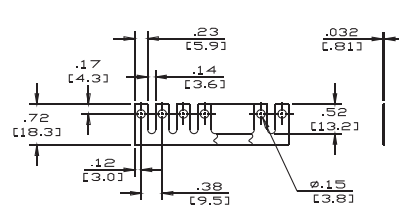
MM = Dim X 25.4

Material: Brass
Finish: Nickel Plate

Note 1: These parts are not necessarily supplied flat. The functioning of the part, however will not be interfered.
Note 2: All dimensions are applicable after the bus (jumper) is torqued down into the associate terminal board

Catalog #	A	B	C	D	E	F	G	H	J	K
J 410 (J411)	0.41	0.25	0.19	0.09	0.10	0.04	0.010	0.094	0.08	NA
J 600	0.62	0.38	0.25	0.12	0.16	0.04	0.015	0.156	0.08	NA
J 601	0.71	0.45	0.31	0.15	0.19	0.06	0.015	0.166	0.11	NA
J 602	0.91	0.56	0.37	0.18	0.27	0.08	0.015	0.190	0.16	NA
J 603	1.13	0.69	0.43	0.21	0.25	0.12	0.031	0.201	0.24	NA
J 604	1.38	0.88	0.50	0.25	0.35	0.15	0.035	0.234	0.32	NA
J 605	1.75	1.13	0.62	0.31	0.39	0.24	0.035	0.266	0.54	NA
TBJB	0.71	0.45	0.31	0.15	0.19	0.06	0.015	0.166	0.11	NA
TBJC	0.91	0.56	0.37	0.18	0.27	0.08	0.015	0.190	0.16	NA
JS 600	0.62	0.38	0.25	0.12	0.16	0.04	0.015	0.156	0.08	0.16
JS 601	0.71	0.45	0.31	0.15	0.19	0.06	0.015	0.166	0.11	0.17
JS 602	0.91	0.56	0.37	0.18	0.27	0.08	0.015	0.190	0.16	0.14

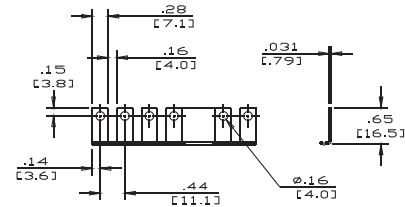
RJ Type Jumpers



Max. no. of sections = 24
600 RJ

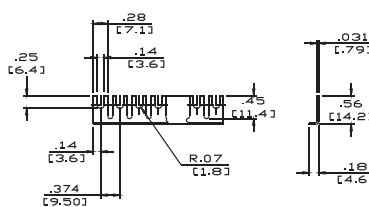
Material: Brass
Finish: Nickel Plate

Note: 670ARZ, 599 Series: Use 600 RJ



Max. no. of sections = 24
601 RJ

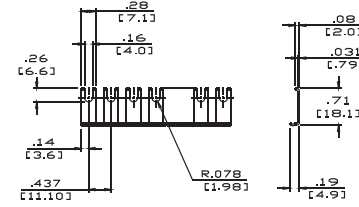
RJS Type Jumpers



Max. no. of sections = 24
600 RJS

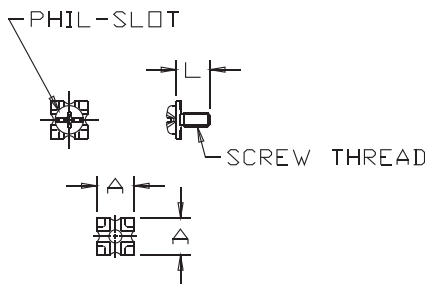
Material: Brass
Finish: Nickel Plate

Note: 670ARZ, 599 Series: Use 600 RJS



Max. no. of sections = 24
601 RJS

Wire Clamp

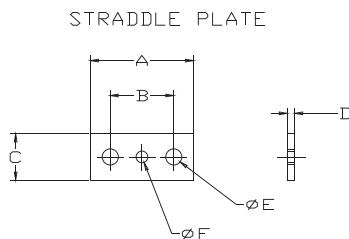


Catalog #	Material	Finish	Screw Thread	L	A
3786	Steel	Zinc	8-32 UNC-2A	0.38	0.41
3765			6-32 UNC-2A	0.31	0.33
3780	Brass	Nickel	8-32 UNC-2A	0.38	0.41
3760			6-32 UNC-2A	0.31	0.33
3860	Brass	Nickel	6-32 UNC	0.30	0.29
3865	Steel	Zinc	6-32 UNC	0.30	0.29

MM = Dim X 25.4

Note: "Termi-lox" washer or equal

Straddle Plate



CAT. NO.	A	B	C	D	E	F	MATERIAL	FINISH
SPB 600	0.56	0.31	0.30	0.032	0.144	N/A	BRASS	TIN
SPB 601	0.71	0.42	0.30	0.031	0.148	N/A	BRASS	NICKEL
SPB 602	0.87	0.50	0.40	0.032	0.189	N/A	BRASS	NICKEL
SPB 603	1.03	0.62	0.45	0.063	0.190	0.143	BRASS	PLATE
SPB 604	1.21	0.75	0.54	0.087	0.187	0.138	BRASS	TIN
SPB 605	1.46	0.87	0.63	0.116	0.220	0.138	BRASS	NICKEL

MM = Dim X 25.4

