

Model CTWH6-125-T200

Wound Primary Current Transformer Medium Voltage

Application

Metering and relaying.

Frequency

50-400 Hz

Maximum System Voltage

25.5 kV, BIL 125 kV full wave.

Continuous Thermal Current Rating Factor

1.50 at 30 °C amb., 1.33 at 55 °C. amb.

2,000:5 - 1.33 at 30 °C. amb.,
1.00 at 55 °C. amb.

2,500:5 and 3,000:5 - 1.00 at 30 °C. amb.,
0.85 at 55 °C. amb.

Specifications

Primary terminals are plated copper bars,
configured as specified.

Secondary terminals are brass screws No.
10-32 with one flatwasher and lockwasher.

Vacuum cast polyurethane resin.

Dual bars spacing is 1/2 inch.

Approximate weight 150 lbs.



REGULATORY AGENCY APPROVALS



Manufactured to meet the requirements of ANSI/IEEE C57.13.

Model CTWH6-125-T200

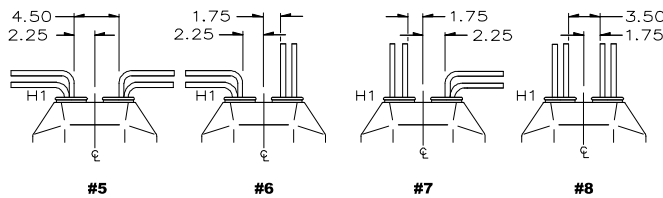
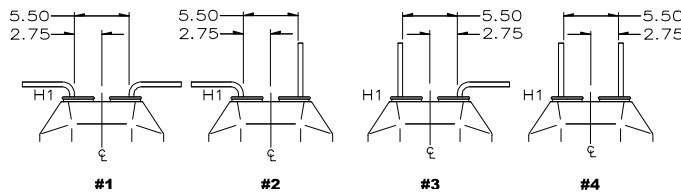
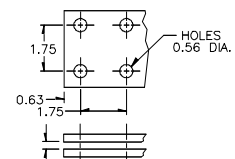
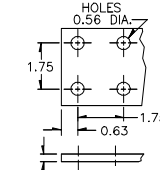
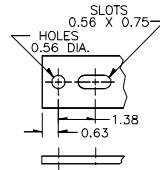
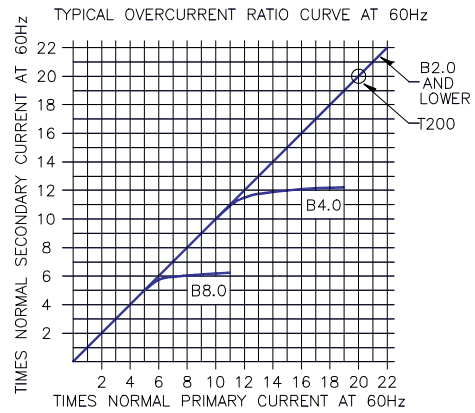
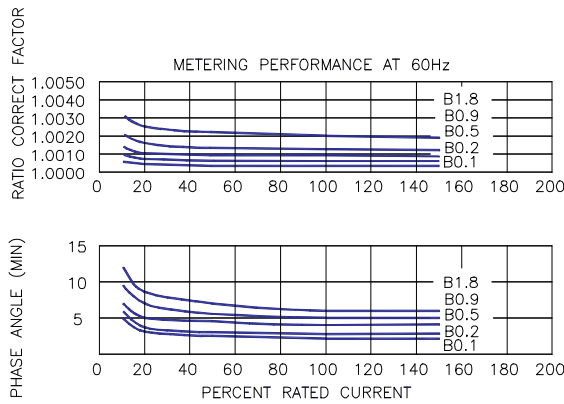
| Catalog Number** | Current Ratio | Relay Class | ANSI Metering Class at 60 Hz | | | | | * Thermal Current Rating 1 Second RMS Amps |
|-----------------------|---------------|-------------|------------------------------|------|------|------|------|--|
| | | | B0.1 | B0.2 | B0.5 | B0.9 | B1.8 | |
| CTWH6-125-T200-801-** | 800:5 | T200 | 0.3 | 0.3 | 0.3 | 0.3 | 0.3 | 87,000 |
| CTWH6-125-T200-102-** | 1,000:5 | T200 | 0.3 | 0.3 | 0.3 | 0.3 | 0.3 | 133,000 |
| CTWH6-125-T200-122-** | 1,200:5 | T200 | 0.3 | 0.3 | 0.3 | 0.3 | 0.3 | 133,000 |
| CTWH6-125-T200-152-** | 1,500:5 | T200 | 0.3 | 0.3 | 0.3 | 0.3 | 0.3 | 266,000 |
| CTWH6-125-T200-202-** | 2,000:5 | T200 | 0.3 | 0.3 | 0.3 | 0.3 | 0.3 | 266,000 |
| CTWH6-125-T200-252-** | 2,500:5 | T200 | 0.3 | 0.3 | 0.3 | 0.3 | 0.3 | 266,000 |
| CTWH6-125-T200-302-** | 3,000:5 | T200 | 0.3 | 0.3 | 0.3 | 0.3 | 0.3 | 358,000 |

*With a burden of B0.1 or greater connected to the secondary.

**Specify primary bus arrangement number (1 through 8).



Model CTWH6-125-T200 Wound Primary CT



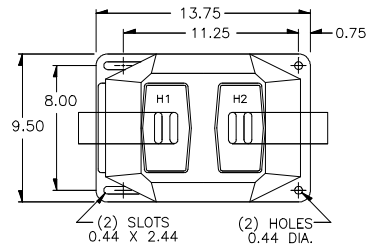
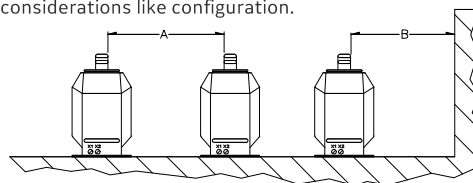
| Ratio | Primary Terminals | Fig |
|---------|-------------------|-----|
| 800:5 | One 1/2 X 2 | A |
| 1,000:5 | One 1/2 X 3 | B |
| 1,200:5 | One 1/2 X 3 | B |
| 1,500:5 | Two 1/2 X 3 | C |
| 2,000:5 | Two 1/2 X 3 | C |
| 2,500:5 | Two 1/2 X 3 | C |
| 3,000:5 | Two 1/2 X 4 | C |

RECOMMENDED MINIMUM SPACINGS

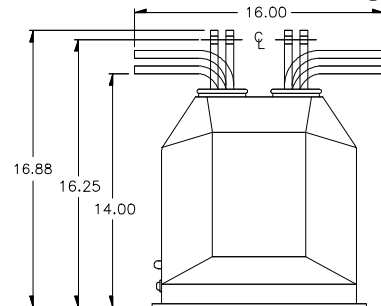
A = Unit to Unit = 8.50" minimum.

B = HV to Ground in Air = 8.50" minimum.

Recommended spacing are for guidance only. User needs to set appropriate values to assure performance for high potential test, impulse test, high humidity, partial discharge, high altitude, and other considerations like configuration.



All bars have full Radius Edge



GEGridSolutions.com

Grid-AIS-L4-ITL_Model_CTWH6-1442-2017_08-EN. © Copyright 2017. General Electric Company and Instrument Transformers LLC reserve the right to change specifications of described products at any time without notice and without obligation to notify any person of such changes.

Worldwide Contact Center

Web: www.GEGridSolutions.com/contact

Phone: +44 (0) 1785 250 070

USA and Canada: +1 (0) 800 547 8629

Europe, Middle East and Africa: +34 (0) 94 485 88 00

