

# Model CTWH5-B-110-T200\*\*

## Wound Primary Current Transformer Medium Voltage

### Application

High accuracy metering and relaying.

### Frequency

50-400 Hz

### Maximum System Voltage

15.5 kV, BIL 110 kV.

### Continuous Thermal Current Rating Factor

5:5 thru 600:5-  
1.50 at 30 °C., 1.33 at 55 °C.

800:5 and over-  
1.0 at 30 °C., 0.8 at 55 °C.

### Specifications

Primary terminals are plated copper bars.  
See chart next page for sizes. Secondary  
terminals are brass screws No. 10-32 with  
one flatwasher, lockwasher.

Vacuum cast in polyurethane resin.  
Other ratios, secondary currents and dual  
ratios are available. Refer to factory.

Approximate weight 76 lbs



#### REGULATORY AGENCY APPROVALS



E145172



LR89403

Manufactured to meet the requirements of ANSI/IEEE C57.13.

### Model CTWH5-B-110-T200\*\*

Catalog Number**	Current Ratio	Relay Class	ANSI Metering Class at 60 Hz					*** Thermal Current Rating 1 Second RMS Amps
			B0.1	B0.2	B0.5	B0.9	B1.8	
CTWH5-B-110-T200-050	5:5	T200	0.3	0.3	0.3	0.3	0.3	470
CTWH5-B-110-T200-100	*10:5	T200	0.3	0.3	0.3	0.3	0.3	950
CTWH5-B-110-T200-150	* 15:5	T200	0.3	0.3	0.3	0.3	0.3	1440
CTWH5-B-110-T200-200	*20:5	T200	0.3	0.3	0.3	0.3	0.3	1840
CTWH5-B-110-T200-250	*25:5	T200	0.3	0.3	0.3	0.3	0.3	2670
CTWH5-B-110-T200-300	*30:5	T200	0.3	0.3	0.3	0.3	0.3	2920
CTWH5-B-110-T200-400	* 40:5	T200	0.3	0.3	0.3	0.3	0.3	3700
CTWH5-B-110-T200-500	*50:5	T200	0.3	0.3	0.3	0.3	0.3	4700
CTWH5-B-110-T200-750	* 75:5	T200	0.3	0.3	0.3	0.3	0.3	7575
CTWH5-B-110-T200-101	*100:5	T200	0.3	0.3	0.3	0.3	0.3	12,940
CTWH5-B-110-T200-151	* 150:5	T200	0.3	0.3	0.3	0.3	0.3	14,375
CTWH5-B-110-T200-201	* 200:5	T200	0.3	0.3	0.3	0.3	0.3	25,875
CTWH5-B-110-T200-301	* 300:5	T200	0.3	0.3	0.3	0.3	0.3	27,520
CTWH5-B-110-T200-401	*400:5	T200	0.3	0.3	0.3	0.3	0.3	40,350
CTWH5-B-110-T200-601	* 600:5	T200	0.3	0.3	0.3	0.3	0.3	66,225
CTWH5-B-110-T200-801	*800:5	T200	0.3	0.3	0.3	0.3	0.3	66,225
CTWH5-B-110-T200-102	*1,000:5	T200	0.3	0.3	0.3	0.3	0.3	66,225
CTWH5-B-110-T200-122	*1,200:5	T200	0.3	0.3	0.3	0.3	0.3	66,225

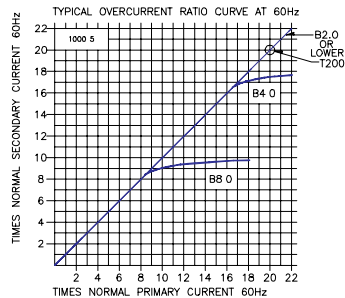
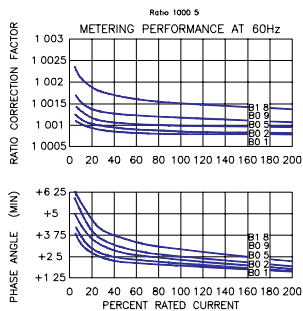
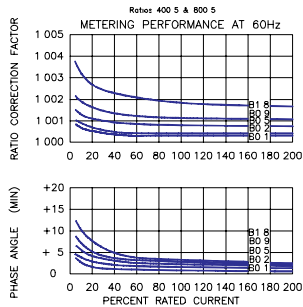
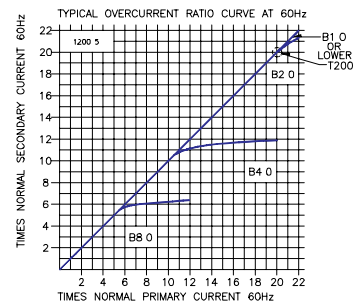
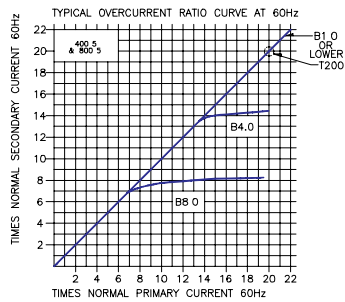
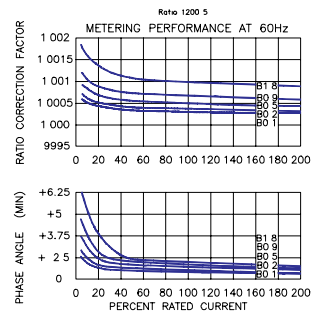
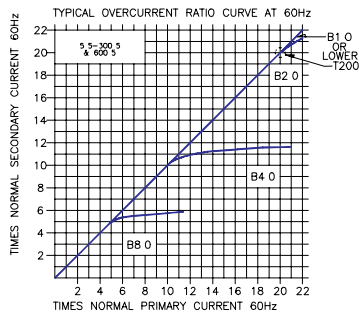
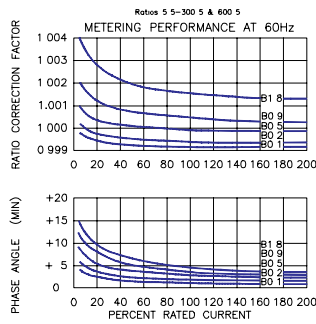
\* All primary voltages marked with an (\*) are approved for revenue metering in Canada by Industry Canada, Approval No. AE-0640 Rev.1.

\*\* Replaces Model CTWH5-110-T200. A test card is provided with each unit.

\*\*\* With a burden of 0.35 Ohms or greater connected to the secondary.

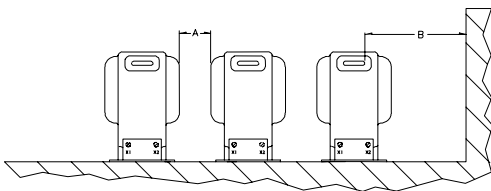


# Model CTWH5-B-110-T200\*\* Wound Primary CT



## Bar Sizes

Primary Current	Dimensions	
	A	B
5 to 200A	0.25	1.50
300 to 600A	0.38	2.00

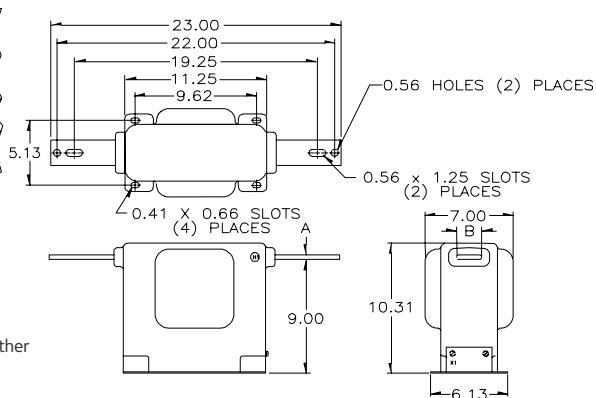


### RECOMMENDED MINIMUM SPACINGS

**A** = Unit to Unit = 1.50" minimum.

**B** = HV to Ground in Air = 6.50" minimum.

Recommended spacing are for guidance only. User needs to set appropriate values to assure performance for high potential test, impulse test, high humidity, partial discharge, high altitude, and other considerations like configuration.



## GEGridSolutions.com

Grid-AIS-L4-ITL\_Model\_CTWH5T200-1441-2017\_08-EN. © Copyright 2017. General Electric Company and Instrument Transformers LLC reserve the right to change specifications of described products at any time without notice and without obligation to notify any person of such changes.

### Worldwide Contact Center

Web: [www.GEGridSolutions.com/contact](http://www.GEGridSolutions.com/contact)

Phone: +44 (0) 1785 250 070

USA and Canada: +1 (0) 800 547 8629

Europe, Middle East and Africa: +34 (0) 94 485 88 00

