

Model CTWH5-S-110

Wound Primary Current Transformer Medium Voltage

Application

For switchgear, extra high short circuit strength.

Frequency

50-400 Hz.

Maximum System Voltage

15.5 kV, BIL 110 kV.

Continuous Thermal Current Rating Factor

5:5 thru 600:5 -
1.50 at 30 °C., 1.33 at 55 °C

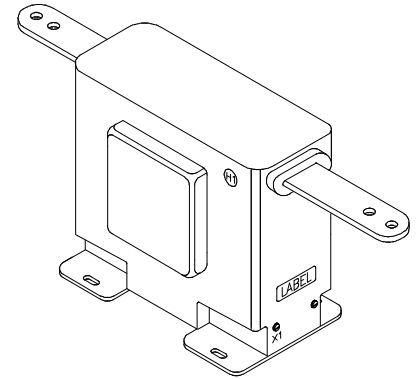
800:5 and over -
1.00 at 30 °C., 0.80 at 55 °C

Specifications

Primary terminals are plated copper bars. See chart next page for sizes. Secondary terminals are brass screws No. 10-32 with one flatwasher, lockwasher.

Vacuum cast in polyurethane resin. Other ratios, secondary currents and dual ratios are available. Refer to factory.

Approximate weight 75 lbs.



REGULATORY AGENCY APPROVALS



Model CTWH5-S-110

Catalog Number***	Current Ratio	Relay Class	ANSI Metering Class at 60 Hz					* Thermal Current Rating 1 Second RMS Amps	** Thermal Current Rating 1 Second RMS Amps
			B0.1	B0.2	B0.5	B0.9	B1.8		
CTWH5-S-110-400	40:5	T20	1.2	-	-	-	-	49,000	10,200
CTWH5-S-110-500	50:5	T30	0.6	2.4	-	-	-	49,000	12,500
CTWH5-S-110-750	75:5	T45	0.6	1.2	2.4	-	-	49,000	11,800
CTWH5-S-110-101	100:5	T60	0.6	0.6	1.2	2.4	-	49,000	15,900
CTWH5-S-110-151	150:5	T100	0.3	0.3	0.6	1.2	2.4	49,000	23,900
CTWH5-S-110-201	200:5	T120	0.3	0.3	0.3	0.6	1.2	49,000	30,000
CTWH5-S-110-301	300:5	T100	0.3	0.3	0.3	1.2	2.4	66,200	47,800
CTWH5-S-110-401	400:5	T80	0.3	0.3	0.3	0.3	0.6	66,200	51,200
CTWH5-S-110-601	600:5	T100	0.3	0.3	0.3	0.3	0.3	66,200	60,000
CTWH5-S-110-801	800:5	T120	0.3	0.3	0.3	0.3	0.3	66,200	60,000
CTWH5-S-110-102	1,000:5	T150	0.3	0.3	0.3	0.3	0.3	66,200	66,200
CTWH5-S-110-122	1,200:5	T200	0.3	0.3	0.3	0.3	0.2	66,200	66,200

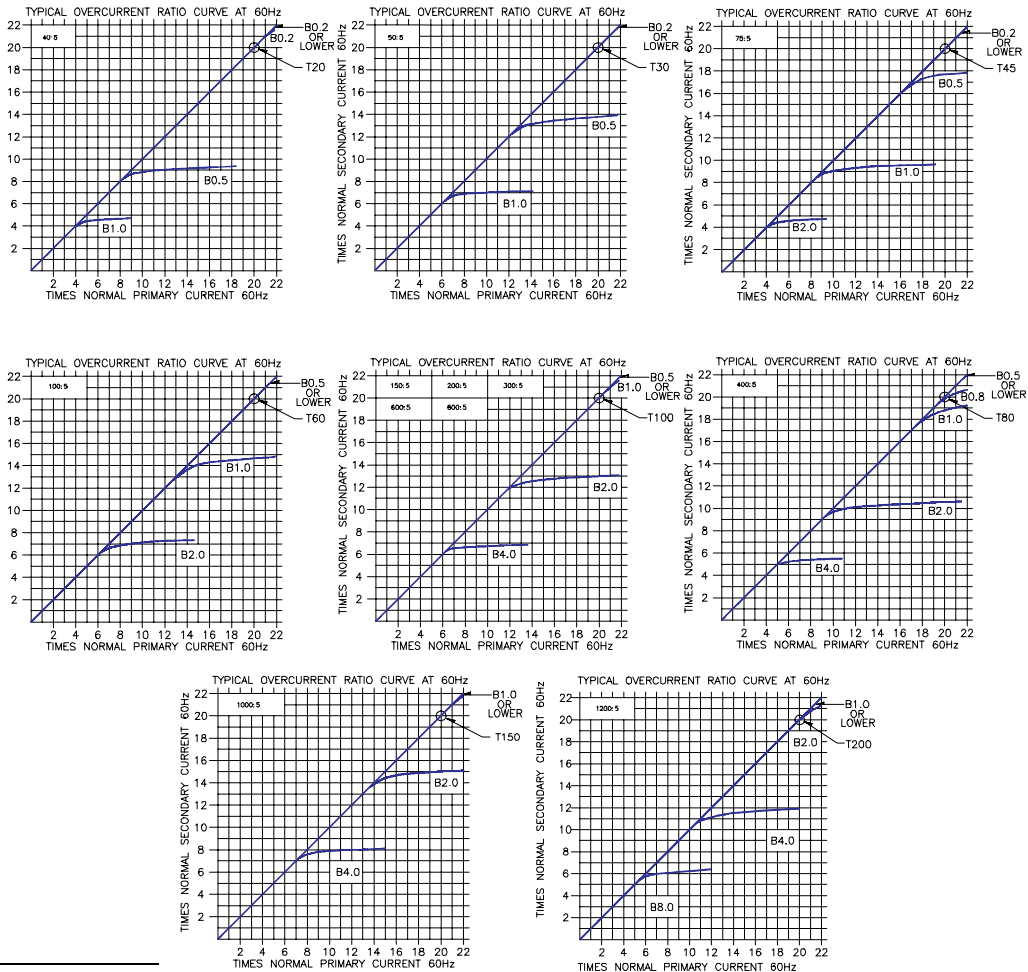
*With a burden of B0.2 or greater connected to the secondary.

**With secondary short circuited.

***A test card is provided with each unit.

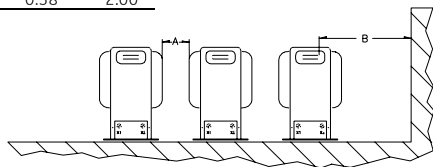


Model CTWH5-S-110 Wound Primary CT



Bar Sizes

Primary Current	Dimensions	
	A	B
40 to 150 A	0.25	2.00
200 to 1,200 A	0.38	2.00

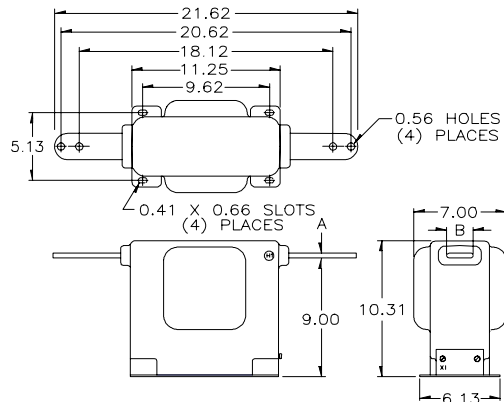


RECOMMENDED MINIMUM SPACINGS

A = Unit to Unit = 1.50" minimum.

B = HV to Ground in Air = 6.50" minimum.

Recommended spacing are for guidance only. User needs to set appropriate values to assure performance for high potential test, impulse test, high humidity, partial discharge, high altitude, and other considerations like configuration.



GEGridSolutions.com

Grid-AIS-L4-ITI_Model_CTWH5S-1440-2017_07-EN. © Copyright 2017. General Electric Company and Instrument Transformers LLC reserve the right to change specifications of described products at any time without notice and without obligation to notify any person of such changes.

Worldwide Contact Center

Web: www.GEGridSolutions.com/contact

Phone: +44 (0) 1785 250 070

USA and Canada: +1 (0) 800 547 8629

Europe, Middle East and Africa: +34 (0) 94 485 88 00

