

Models 3CPTDV3-60-75 & 3CPTDV5-95-75

Control Power Transformer Medium Voltage

Application

To provide control power in medium voltage switchgear.

Frequency

60 Hz.

Insulation Level

5 kV & 15 kV Class,
60 kV & 95 kV BIL, 150°C

Thermal Rating

75 kVA at 30 °C. ambient.
64.3 kVA at 55 °C. ambient.

H.V. Terminals are No. 8-2 connector.
L.V. Terminals are 1/2-13 brass studs.

Windings are encapsulated in epoxy resin.

Mounting base is steel.

Assembly is varnish coated.

(6) Mounting slots are 0.37 x 0.75, Typ.

Low voltage available, 208 Y/120 V.

For indoor use.

Approximate weight 2,000 lbs.



For Vertical Mounting

Standard Typical Voltage - Consult Factory for Specials

Models 3CPTDV3-60-75 & 3CPTDV5-95-75

**Catalog Number	Primary Voltage	*Fuse Rating
3CPTDV3-60-75-4161**	4,160	25E
3CPTDV3-60-75-482**	4,800	20E

**Catalog Number	Primary Voltage	*Fuse Rating
3CPTDV5-95-75-722**	7,200	20E
3CPTDV5-95-75-842**	8,400	20E
3CPTDV5-95-75-123**	12,000	10E
3CPTDV5-95-75-1242**	12,470	10E
3CPTDV5-95-75-1322**	13,200	10E
3CPTDV5-95-75-1382**	13,800	10E

*Note all fuse rating are based on NEC transformer overcurrent protection recommendations. Specific applications may require other other ratings.

**For 1 ± 7 1/2% taps use suffix "A" after Catalog No.

**For 2 ± 2 1/2% taps use suffix "B" after Catalog No.



Models 3CPTDV3-60-75 & 3CPTDV5-95-75 - for Vertical Mounting

PRIMARY VOLTS	CONNECT
107.5%	1 - 2
100%	2 - 3
92.5%	3 - 4

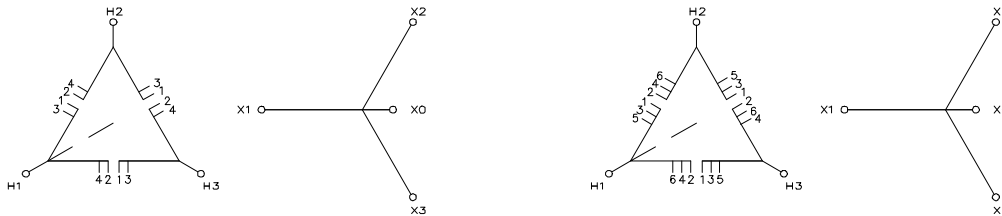
1 ±7-1/2% PRIMARY TAPS
SUFFIX "A"

Connection Diagrams

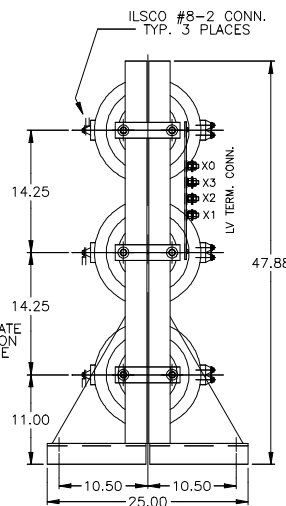
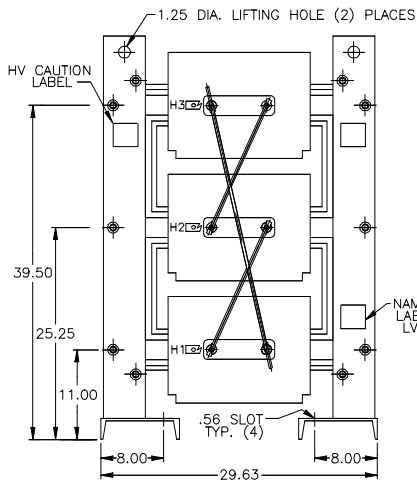
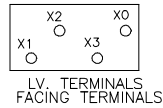
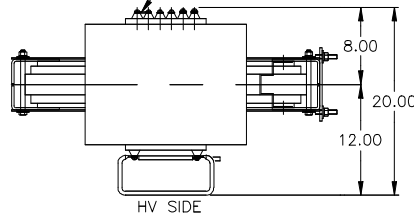
PRIMARY VOLTS	CONNECT
105%	1 - 2
102.5%	2 - 3
100%	3 - 4
97.5%	4 - 5
92.5%	5 - 6

2 ±2-1/2% PRIMARY TAPS
SUFFIX "B"

For vertical mounting



NOTE: LV TERM. CONN. NOT SHOWN THIS VIEW
PRIMARY TAPS



GEGridSolutions.com

Grid-AIS-L4-ITL_Model_3CPTDV3-60-75-1080-2017_05-EN. © Copyright 2017. General Electric Company and Instrument Transformers LLC reserve the right to change specifications of described products at any time without notice and without obligation to notify any person of such changes.

Worldwide Contact Center

Web: www.GEGridSolutions.com/contact

Phone: +44 (0) 1785 250 070

USA and Canada: +1 (0) 800 547 8629

Europe, Middle East and Africa: +34 (0) 94 485 88 00

