

Provide Superior Safety & Protection in Harsh DC Traction Applications

The New Cooper Bussmann[®] 1200V DC Fuse Allows Maximum Protection Performance for Traction Applications

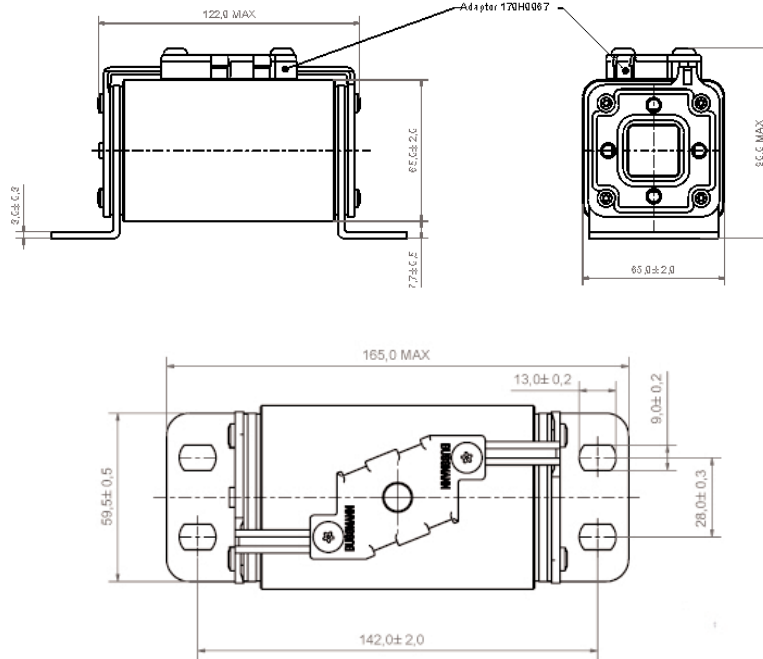
- Extremely Low Let Through Energy
- Very High DC Voltage Capacity in Highly Inductive Loads
- Blown Fuse with Visual or Remote Indication
- Bladed Terminals
- Industry Standardized Fuse Size: Size 72 (Cooper Bussmann[®] 2⁺)
- Typical Applications:
 - 1200V DC and Below Circuits
 - Light Rail / Heavy Rail
 - DC Link/Power Converters
- Fully RoHS Compliant



1200V DC Traction Fuse Specifications

Catalogue Symbol: 170F82XX
Description: DC Traction Fuse
Construction: Ceramic fuse body with silver element and silver plated copper end caps
Ampere Rating: 160 to 420A
Voltage Rating: 1200V DC
Interrupting Rating: 100kA at L/R = 15ms
RoHS Status: Compliant

Dimensional Data



Catalogue Numbers

Size	Current Rating (Amps)	Interrupting Rating	Max I ² t @ 1000V		Watts Loss In (W)	Catalogue Numbers
			L/R = 15ms	L/R = 45ms		
2+	160	@ 1200VDC = 100kA L/R = 15ms,	12000	20000	75	170F8230
	200		20000	35000	85	170F8231
	250		43000	75000	94	170F8232
	315	@ 100VDC = 100kA L/R = 45ms	87000	150000	104	170F8233
	400		180000	310000	120	170F8234
	420		215000	375000	122	170F8235

Competitor Cross-Reference

Current Rating	Ferraz Catalogue Number	Cooper Bussmann Catalogue Number
160	CC 12 SRG 72 QF 0160	170F8230
200	CC 12 SRG 72 QF 0200	170F8231
250	CC 12 SRG 72 QF 0250	170F8232
315	CC 12 SRG 72 QF 0315	170F8233
400	CC 12 SRG 72 QF 0400	170F8234
420	CC 12 SRG 72 QF 0420	170F8235

Accessories

Micro-switch Catalogue Number: 170H0069

See Cooper Bussmann® Data Sheet 170K5520/21 for full technical data

Mouser Electronics

Authorized Distributor

Click to View Pricing, Inventory, Delivery & Lifecycle Information:

Eaton:

[170F8234](#) [170F8231](#)